

**TACKLING MIGRATION CHALLENGES**  
**Side event to 10th ARLEM Plenary Session**  
**26 February 2019, Reales Alcázares, Sevilla**

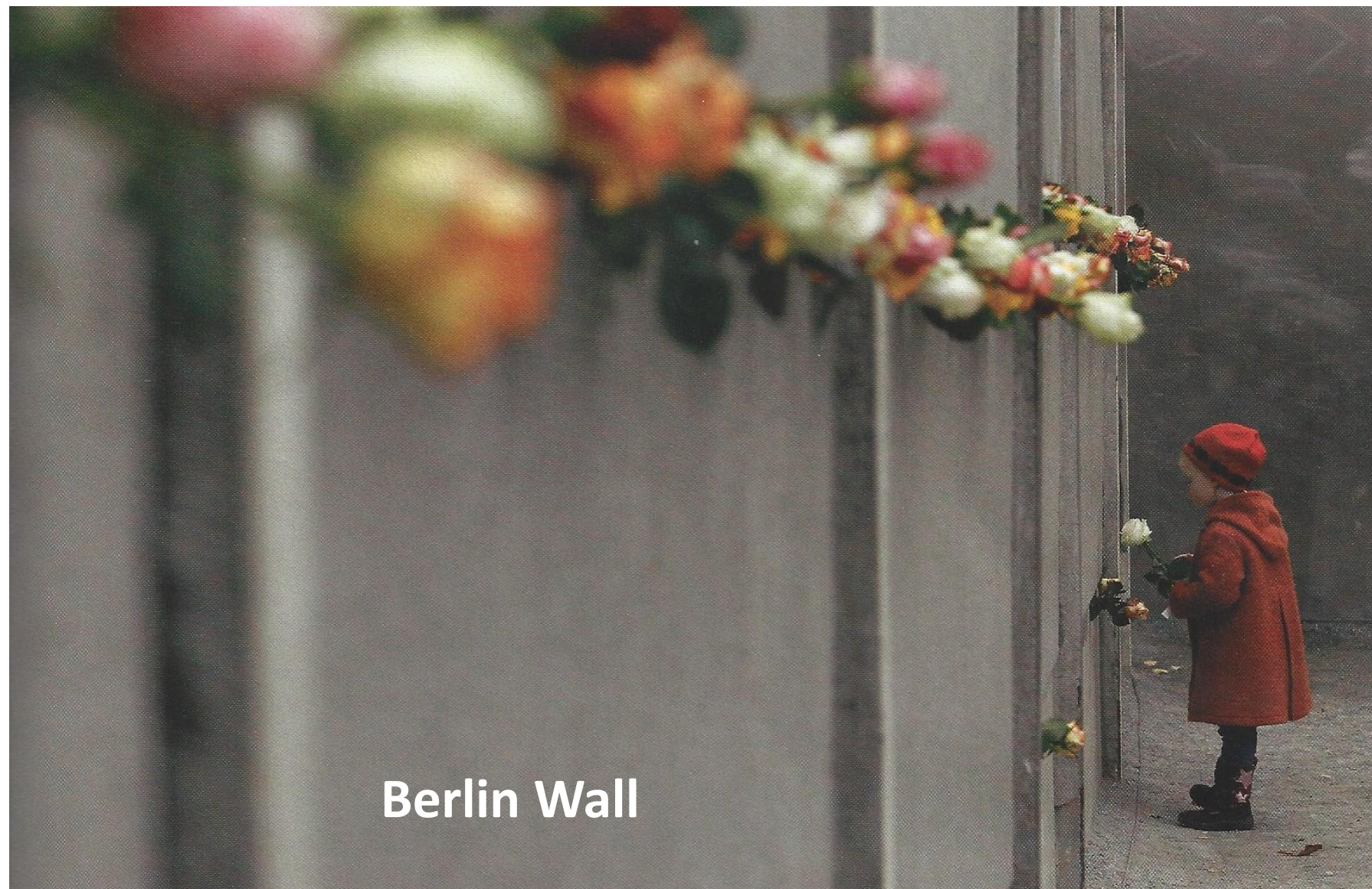
# Tackling Migration in Border Regions

Drawing some lessons from Cross-Border Cooperation  
(CBC) to support Co-Development processes

Martín Guillermo Ramírez  
Association of European Border Regions (AEBR)







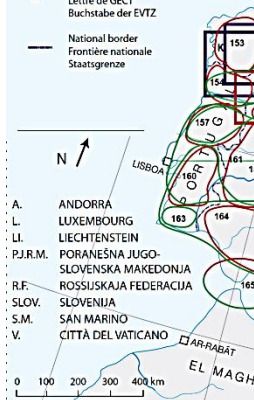
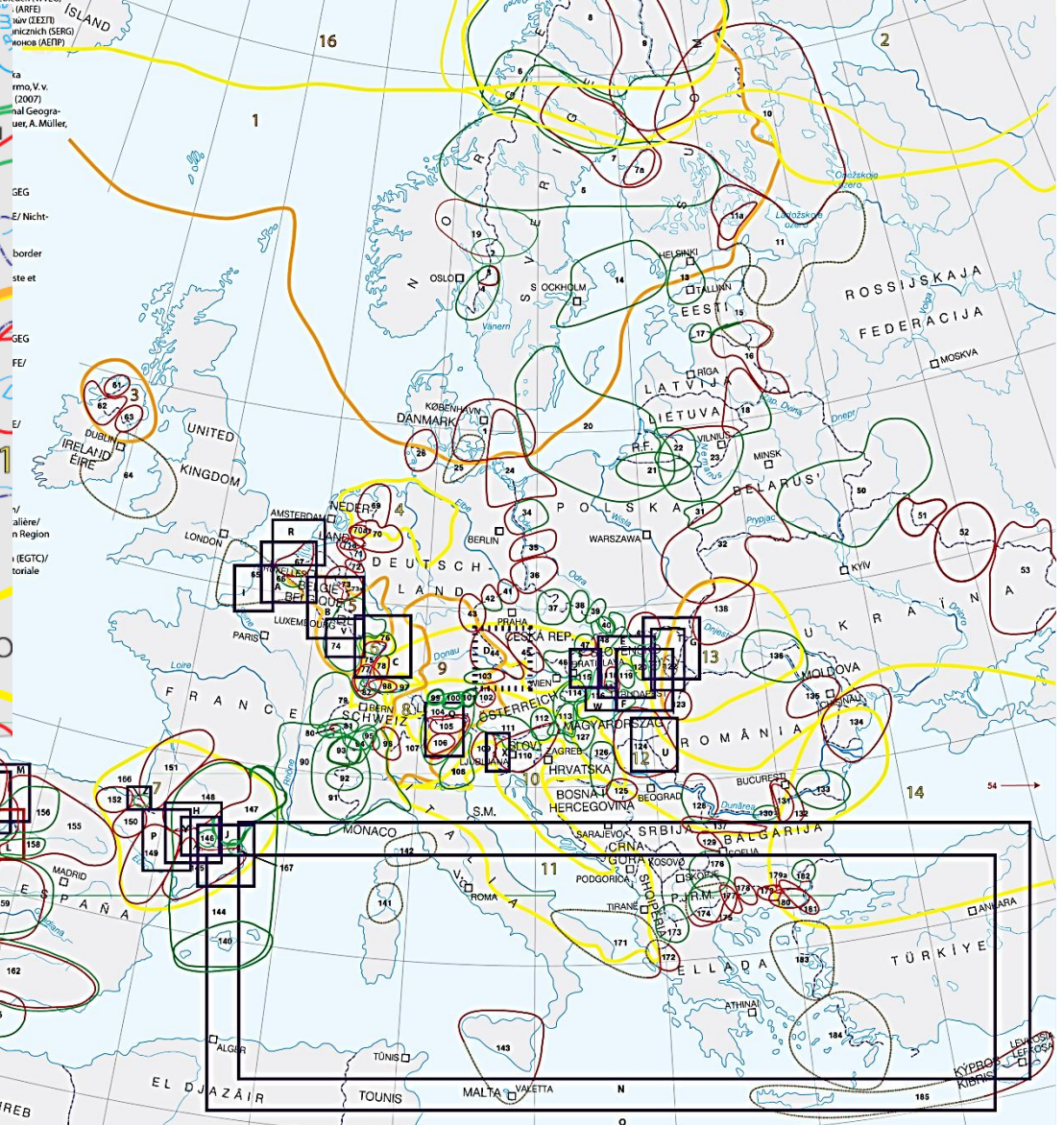
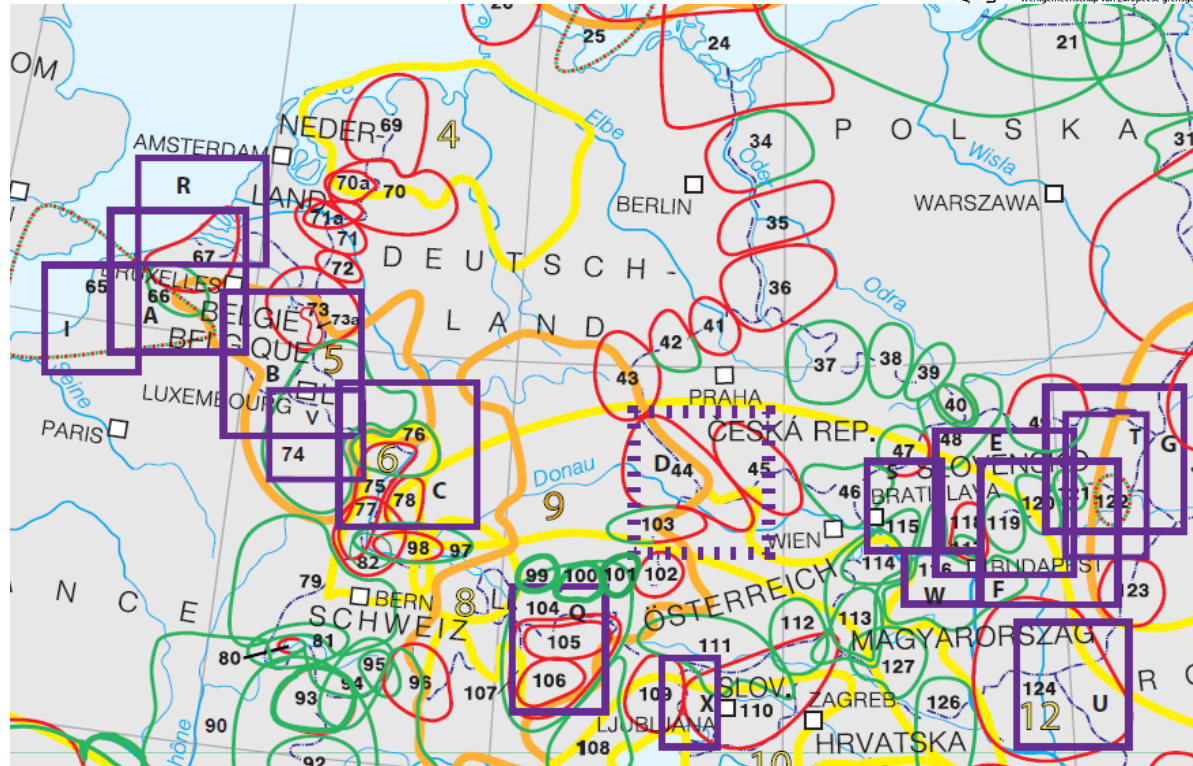
Berlin Wall

Photo: REUTERS, All Rights Reserved, © CAMBIO 16, EIG Multimedia S.L., Madrid (Spain)



# Cross-Border Cooperation Areas/Structures 2011 Régions/structures de coopération transfrontalière 2011 Regionen/Strukturen grenzübergreifender Zusammenarbeit 2011

Editing/Éditeur/Herausgeber:



Map of CBC Areas, AEBR, Gronau, 2011





Image: Thinkstock / Alex Finnis / BuzzFeed,  
Map of Europe, as British people see it. In:  
12 Maps Only British People Will Find Funny



# Mental maps!



Image: Crossing the  
Borders project, CESCO,  
Budapest, 2015



# The refugees's issue in Europe



Europe and refugees have a long history:

- 1492: expulsion of Jewish people from Spain
- 1685: persecution of protestants (*Huguenots*) in France
- 1933-1945: persecution of Jewish, Roma, etc., under the Nazi regime
- 1939: persecution of Republicans in Spain
- 1940: Exodus of Belgium and French people
- 1945: the Iron Curtain: 60 Million refugees
- 1956: persecution of Democrats in Hungary
- 1962: repatriation of Algerian French (1 Million)
- 1968: persecution of Democrats in Czechoslovakia
- 1991: victims of ethnic purge in Yugoslavia

(Translated into English and updated from *L'Europe et la crise des réfugiés*, European Commission, DG Communication)



# EU Immigration Policy



- Background: Tampere European Council 1999
- Political Progress
  - A. The European Pact on Immigration and Asylum (2008)
  - B. The Stockholm Programme – An Open and Secure Europe Serving and Protecting Citizens – 2010-2014 Action Plan
  - C. The Global Approach to Migration and Mobility (November 2011)
- EU Acquis on Immigration and Integration
  - 1. Shared competences
  - 2. EU Legal Instruments on Immigration: Directives & new proposals (Trilogue)
  - 3. Fight against illegal immigration. Supporting Directives
- Unaccompanied Minors
- Immigrants' Integration: EU Agenda and Tools
- European Migration Network, EU Immigration Portal, Migration Management Funding

(Source: EU Immigration Policy Outline)



# Common EU Approach to Managing Immigration

- Immigration for the purpose of studies or research
- Immigration for the purpose of work
- Immigration for the purpose of family reunification
- No immigration without integration
- Tackling irregular immigration
- Dialogue and cooperation with non-EU countries
- EU funding to support the management of immigration
- A common approach to asylum

(Source: *Migration and Asylum – Building an open and safe Europe*, European Commission)





(Photo: Rights Status Unknown, not to be shared or published)



The map displays the borders of South American countries with various regions and cities highlighted. The regions are labeled in colored boxes with lines pointing to their respective locations on the map:

- Ecuador-Colombia** (Purple box)
- Perú-Colombia** (Purple box)
- Perú - Ecuador** (Black box)
- Perú - Bolivia** (Black box)
- Rombo Andino Norte (fronteras del Perú)** (Black box)
- Triple Frontera Amazónica (BR-CO-PE)** (Purple box)
- Santa Cruz (BO) – Matto Grosso do Sul (BR) – (PY)** (Orange box)
- Gobierno Federal de Brasil** (Orange box)
- Ponta Porá (BR)- Pedro Juan Caballero (PY)** (Orange box)
- Brasil-Perú** (Purple box)
- Rombo Aymara** (Green box)
- Rombo ISI** (Green box)
- Foz do Iguaçu – Puerto Iguazú y Ciudad del Este (Triple Frontera BR-AR-PY)** (Blue box)
- Dionisio Cerqueira – Barracão (BR) Bernardo Irigoyen (AR)** (Orange box)
- Río Paraná (COMIP)** (Red box)
- Monte Caseros, Bella Unión y Barra do Quarai (Triple Frontera Austral)** (Blue box)
- Laguna Merín y ciudades gemelas (Brasil-Uruguay)** (Blue box)
- Rombo del Plata** (Blue box)
- Rombo Andino Sur** (Green box)
- Great Neighbourhood** (Green box)
- Western Suburbs** (Red box)

Other cities and regions labeled in green boxes include:

- Arica (A. y Parinacota)
- Tacna
- Iquique (Tarapacá)
- Antofagasta
- Coquimbo
- Esquel
- Rio Mayo

*Nations of Central America and capitals.*  
Image by Alex Covarrubias (Wikipedia), 2007  
GNU Free Documentation License

Nations of Central America and capitals.  
Image by Alex Covarrubias (Wikipedia), 2007  
GNU Free Documentation License

The map illustrates the geographical context of West Africa, highlighting various regions and their associated challenges. Key areas and challenges include:

- Southern Mediterranean processes:** Located in the northernmost part of the map, involving countries like Morocco, Algeria, and Libya.
- Great Neighbourhood:** A central region encompassing countries like Mauritania, Mali, Niger, and Chad.
- Western Sahara / SADR:** A region in the northwest, bordering Morocco and Mauritania.
- Terrorism:** A challenge primarily in the Sahel region, including Mali, Niger, and Chad.
- Liptako-Gourma:** A specific area of conflict in Mali.
- Dev't corridor Maradi-Katsina-Kano (MK2):** A development corridor in Nigeria.
- Axis Mopti-Ouahigouya:** A conflict axis in Mali.
- River Senegal and Karakoro Basin:** A region in Mauritania and Mali.
- SKBo:** A specific area of conflict in Mali.
- S Senegambia Guinea-Bissau (+Guinea Conakry?):** A region in West Africa, including Senegal, Guinea-Bissau, and Guinea.
- Trafficking:** A challenge in the coastal regions of West Africa.
- Periodic conflicts:** Challenges in the Sahel and coastal regions.
- Challenges, conflicts, ...:** A general label for the various issues in the region.
- CBC processes:** A label for the Comprehensive Community Broadcasting (CBC) processes.



(Photo: Rights Status Unknown, not to be shared or published)





(Photo: Rights Status Unknown, not to be shared or published)





# Managing the refugee crisis

State of Play of the Implementation of the Priority Actions under the European Agenda on Migration

## PRIORITY ACTIONS

**Operational measures**



**Implementation of EU law**



**Budgetary support**



**External dimension**

## WAY FORWARD

**December 2015**  
Proposal to establish a European Border and Coast Guard and extension of the Frontex mandate

**March 2016**  
Legal migration package including revision of Blue Card  
Further reform of the Dublin Regulation  
Proposal for a structured system on resettlement  
Updated strategy on human trafficking

## OPERATIONAL MEASURES



### Progress made

Presence at sea tripled; many more lives saved  
Decision to relocate 160,000 people in need of international protection among Member States; relocations have started  
Hotspots: Migration Management Support Teams are becoming operational in Italy and Greece  
Resettlements from third countries: commitment to welcome over 20,000 refugees in the next two years  
EU Action Plan on Return endorsed in October; first returns from the 'hotspots' have taken place

### Next steps

Member States to meet calls for experts and equipment to support the Migration Management Support Teams  
Member States to notify how many relocation and resettlement places they will provide  
Member States to identify national contact points and send liaison officers to Italy and Greece to make resettlement and relocation work.  
Returns to Pakistan from Greece to start  
Member States to provide adequate resources for Operations Triton and Poseidon

## BUDGETARY SUPPORT



### Progress made

1.7 billion for 2015 and 2016 (emergency assistance, additional funding for FRONTEX, EASO, EUROPOL, humanitarian aid etc.):  
- Agreement on additional €800 million from the EU budget in 2015  
- Further €900 million for 2016 now before the budgetary authority  
This brings the total available funding to address the refugee crisis to €9.2 billion in 2015 and 2016

### Next steps

Member States to match EU funding for the UNHCR, World Food Programme and other organisations (€500 million), the EU Regional Trust Fund for Syria (€500 million) and the Emergency Trust Fund for Africa (€1.8 billion).

## IMPLEMENTATION OF EU LAW



### Progress made

40 new infringement decisions against 19 Member States, on top of 34 cases already open

### Next steps

Member States to fully implement the Common European Asylum System  
Commission continues to pursue swiftly and effectively infringement procedures  
Commission is working towards reinstating Dublin transfers to Greece  
Schengen: Commission Opinion on the prolongation of temporary border controls by Germany, Austria and Slovenia

## EXTERNAL DIMENSION



We are tackling the root-causes of the refugee crisis through a diplomatic offensive and extra funding

### Progress made

Turkey is a pivotal partner: a draft Action Plan on refugee support and migration management is being discussed  
Trust Funds for Syria and Africa established  
Cooperation between the EU and countries of origin and transit is being reinforced.  
An EU Action Plan against migrant smuggling is being implemented.

### Next steps

Finalising the Action Plan with Turkey  
Member States to provide additional funding  
Continued diplomatic offensive, incl. Valletta Summit on Migration with African partners in November

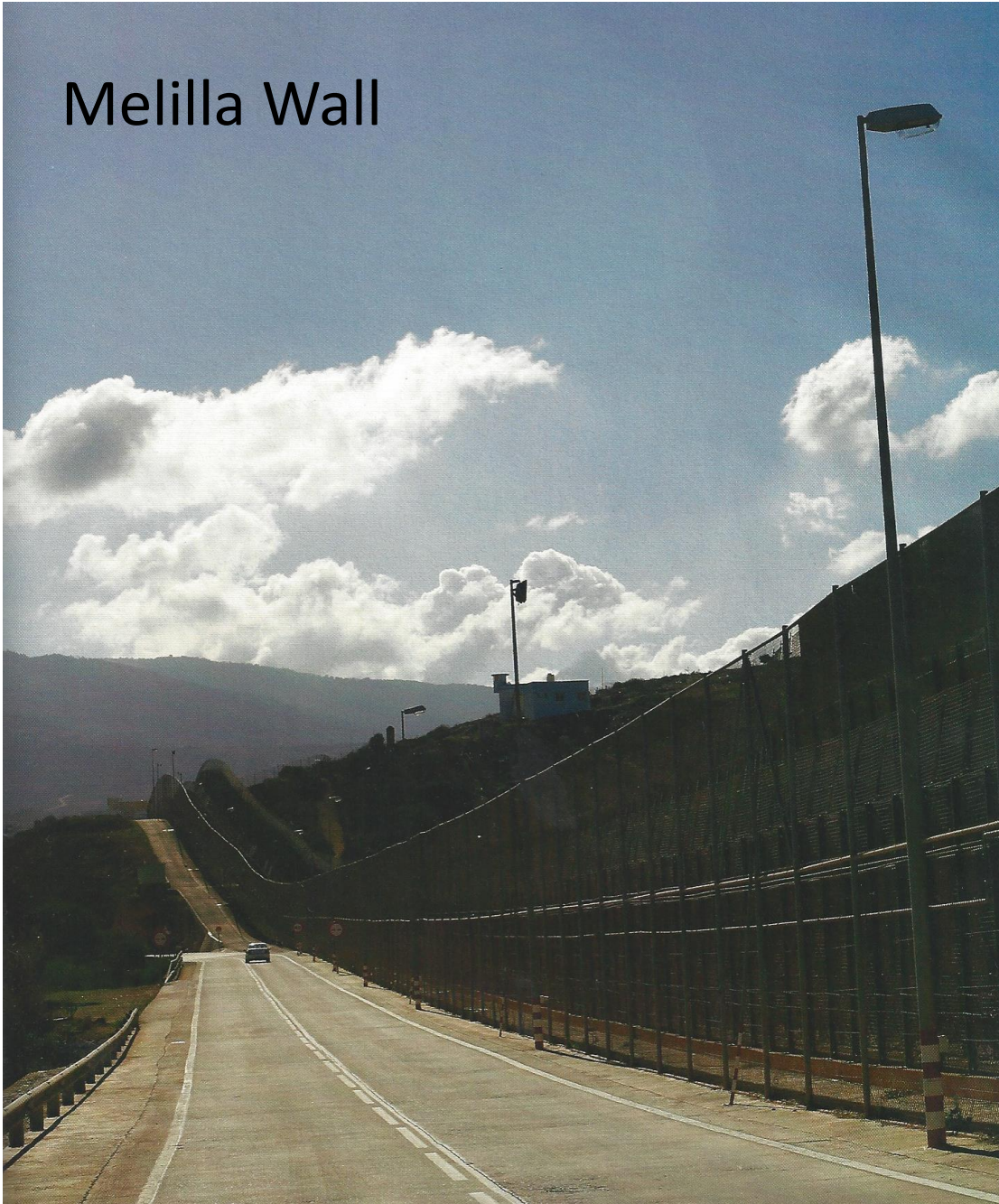


# Migration, Refuge and Asylum in the EU

- No EU country can be left alone to address huge migratory pressure
- EU agenda on migration sets out internal and external policies involving all actors: MSs and institutions, int'l orgs, civil society, ...
- Structural limitations, but better managed collectively
- Attention to main „hotspots“ and relocation schemes
- Financial support, including EU-Turkey agreement, Trust Fund for Syria, Humanitarian Aid and International Cooperation in third countries.



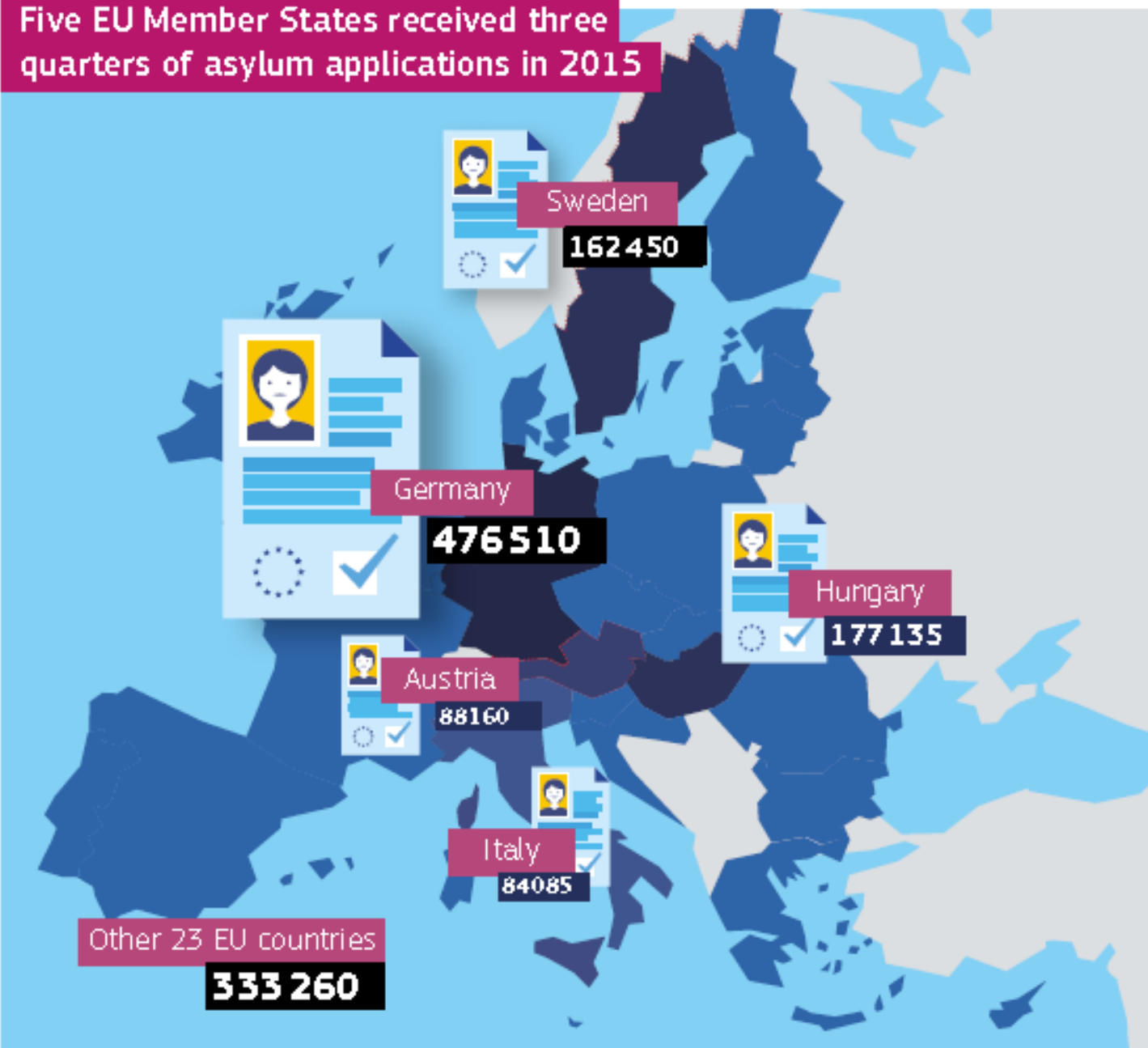
# Melilla Wall



Photos: REUTERS, All Rights Reserved, © CAMBIO 16, EIG Multimedia S.L.,  
Madrid (Spain)



Five EU Member States received three quarters of asylum applications in 2015



Source: Eurostat.



# Gaza Wall



Photo: REUTERS, All Rights Reserved, © CAMBIO 16, EIG Multimedia S.L., Madrid (Spain)





Turkey Wall

Photo: REUTERS, All Rights Reserved, © CAMBIO 16, EIG Multimedia S.L., Madrid (Spain)





(Photo: World Press Photo, Rights Status Unknown, not to shared or published)



## Immediate response

- Triple the capacities and assets for the Frontex joint operations Triton and Poseidon in 2015 and 2016.
- Activation of the Emergency system under Article 78(3) of the Treaty to better distribute Asylum seekers in Europe.
- A new “Hotspot” concept: under the coordination of the Commission, EASO, Frontex and EUROPOL will be working on the ground in frontline Member States to swiftly identify, register and fingerprint migrants arriving and coordinate returns.
- Mobilising additional € 60 million in emergency funding for frontline Member States.
- A € 50 million resettlement scheme to transfer 20 000 persons to Europe in a safe and legal manner.
- € 30 million for the Regional Development and Protection Programmes (RDPPs) starting from North Africa and the Horn of Africa in 2015/2016.
- Information pooling by Europol with the contribution of all EU agencies to dismantle criminal networks, Frontex and EUROPOL to develop profiles of vessels traffickers could potentially use.
- Common Security and Defence Policy (CSDP) operations in the Mediterranean to capture and destroy boats.
- Migration to become a specific component of ongoing Common Security and Defence policy (CSDP) missions already deployed in Niger and Mali, which will be strengthened on border management.
- Establishment of pilot multi-purpose centre in Niger in cooperation with IOM and UNHCR.
- Deployment of European Migration Officers to EU delegations in key countries of transit.

## The way forward

### Reducing the incentives for irregular migration

**283 532 detected irregular border crossings in 2014 (164% increase on previous year)**

- An Action Plan to step up investigation and prosecution of criminal networks of smugglers, to help disrupt them, bring the perpetrators to justice and seize their assets.
- A return handbook to align return practices in all Member States.
- Stronger partnerships with Third Countries in the field of smuggling and return.
- A stronger engagement of EU delegations in key countries.
- Stronger role of Frontex in return operations, also by establishing a dedicated department to support Member States in implementing the Return Directive.



### Saving lives and securing the external borders

**Out of the 24 000 migrants rescued in the Channel of Sicily since the beginning of 2015, nearly 7300 persons were saved by means deployed by Frontex**

- Revised proposal on Smart Borders.
- Finance initiatives to strengthen the capacities of countries in North Africa to intervene and save lives of migrants in distress.
- Reflection on the establishment of a European System of Border Guards.
- Stronger role of Frontex.



### A strong asylum policy

**626 715 asylum applicants in 2014 (45% increase on previous year)**

- Full implementation of the Common European Asylum system through a new monitoring mechanism.
- Evaluation of the Dublin system by mid-2016 in view of its revision.
- Decisive initiatives to fight abuses of the asylum system.
- Reflection on the establishment of a single asylum decision process to guarantee equal treatment of asylum seekers throughout Europe.



### A new policy on legal migration

**17 million Schengen visas issued in 2013  
2.3 million residence permits issued in 2013**

- Review the Blue Card directive.
- Establishment of a dedicated platform of cooperation with Member States, businesses and trade unions on economic migration.
- Cheaper, faster and safer remittance transfers.
- Reflect on the development of an “expression of interest system” which would use verifiable criteria to automatically make an initial selection of potential migrants.
- Maximising the development benefits for countries of origin.



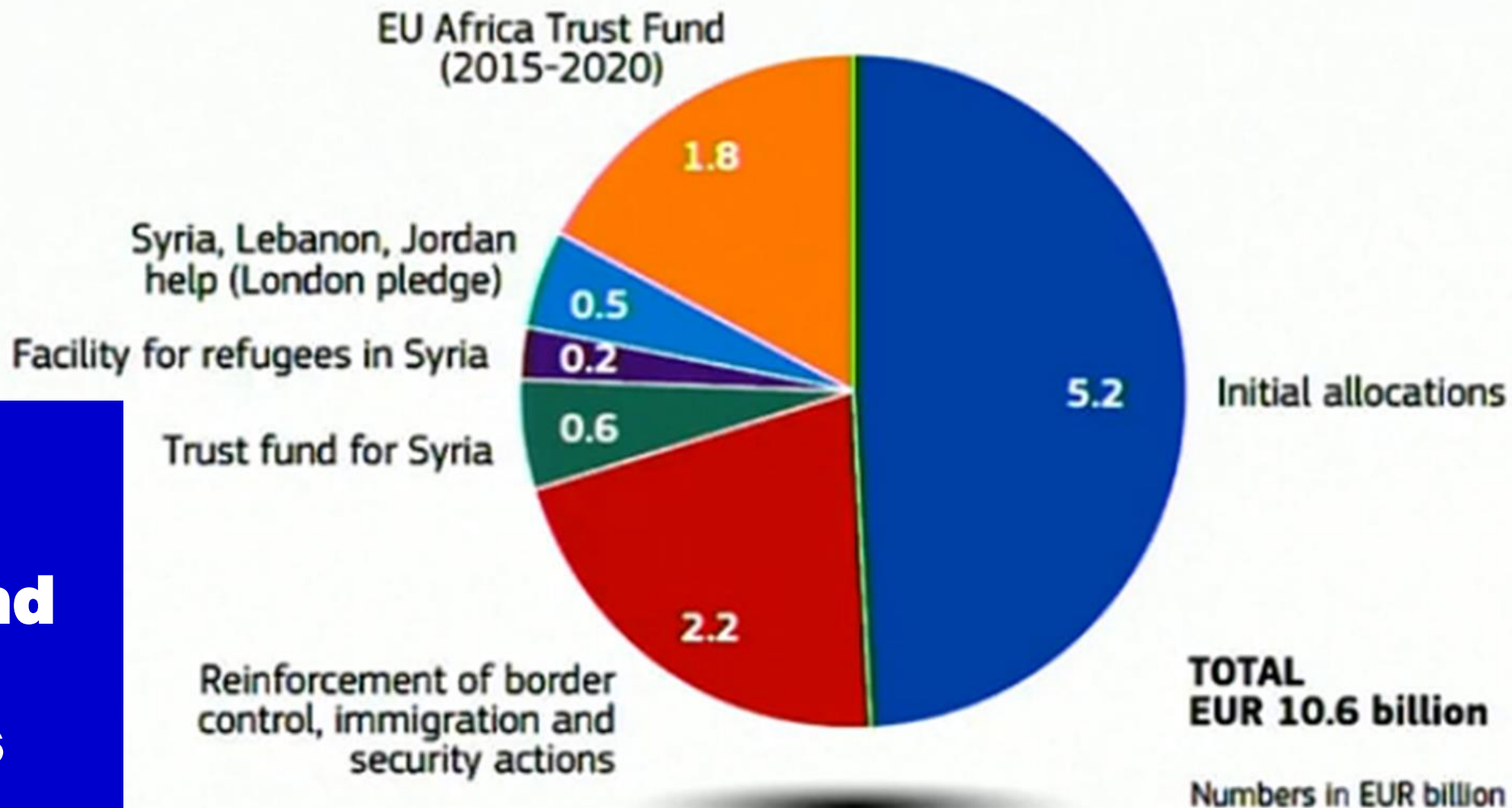




(Photo: Rights Status Unknown, not to be shared or published)



## EU response to refugee flows



**Budget  
Trust Fund  
for  
Refugees**





(Photo: Rights Status Unknown, not to be shared or published)



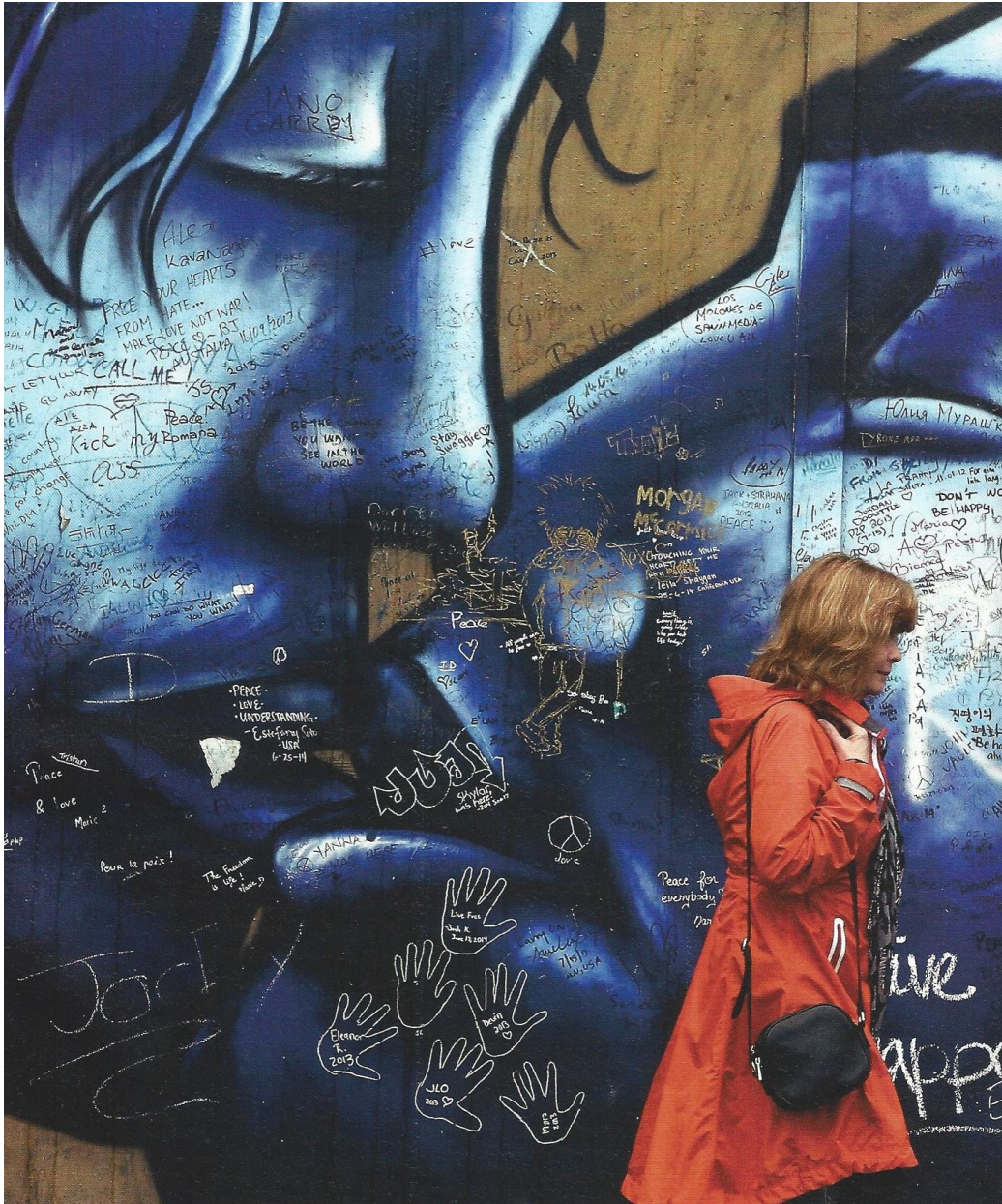
# Strategic directions proposed by a consortium of EU foundations and think-tanks

- a) Create political will to develop a forward-looking EU strategy
  - A1. Reflective capacities and strengthen dialogue between and within MSs
  - A2. Consolidate joint actions to build success stories
  - A3. Deliver on agreements to build trust
- b) Develop coherent and fair mechanisms to better manage flows
  - B1. Improve stability and opportunities in the regions of origin
  - B2. Create safe passages and improve asylum processes
  - B3. Shares responsibilities across the EU
- c) Promote work and education focused integration
  - C1. Apply a social investment perspective to integration
  - C2. Encourage and enable early employment and education
  - C3. Strengthen social belonging
- d) Mobilise society to promote inclusivity
  - D1. Increase intercultural dialogue and respect
  - D2. Promote open, evidence-based dialogue
  - D3. Support bottom-up approaches

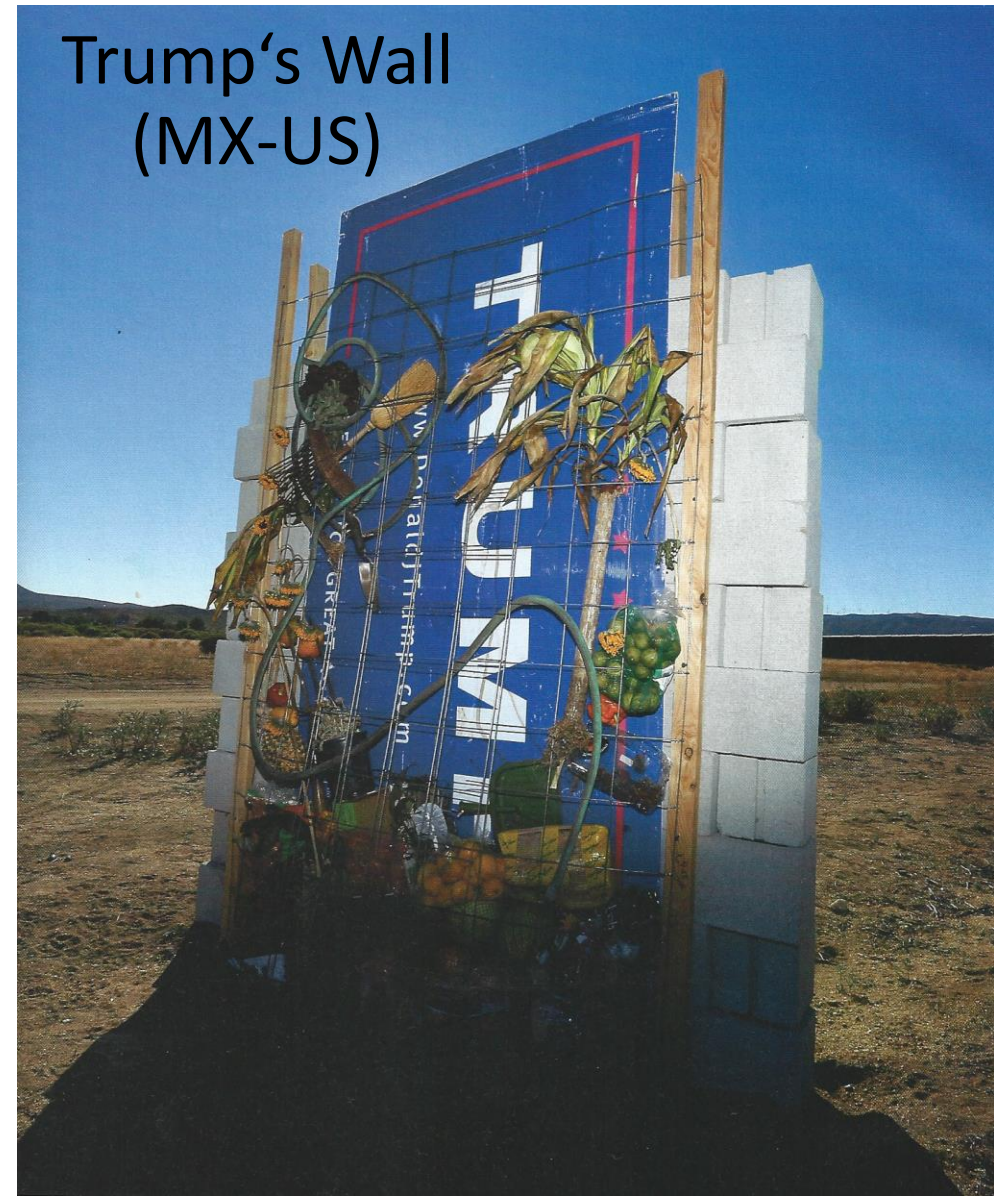
(Source: Vision Europe Summit, *Building Common Ground: Towards strategic migration and refugee policies in Europe*, Lisbon, 22 November 2016)



## Belfast Wall



## Trump's Wall (MX-US)



Photos: REUTERS, All Rights Reserved, © CAMBIO 16, EIG Multimedia S.L., Madrid (Spain)



Main proposal for citizens:  
tolerance, understanding, trust, interculturality...



(Photo: Rights Status Unknown, not to be shared or published)

Thank you very much for your attention!